

the
FIGHTING
Eagles



LT. COL HENRY J. PASCHO
Commander

MISSION . . . The mission of the 334th Fighter Interceptor Squadron is to provide and maintain air superiority by the interception and destruction of enemy aircraft, to fly escort or cover for the various United Nations Forces and to defend friendly areas from aggression. To accomplish this end the Pigeon Squadron has engaged in a daily training program to continue to supply the high quality pilots and airmen the 334th has been noted for since its founding as the famous Eagle Squadron of WW II. The unit stands ready and capable to act as the needs of our country may direct.

— ORDERLY ROOM —

1/Lt J. H. Lavette, M/Sgt W. R. McCartt.



S/Sgt R. W. O'Brien, S/Sgt M. J. Yates.





— OPERATIONS —

L to R: Lt. Col. H. J. Pasche, Lt. Col. V. W. Bollwerk, Lt. Col. C. B. Wine.



1/Lt. Paul D. Carrick
"CLOD"



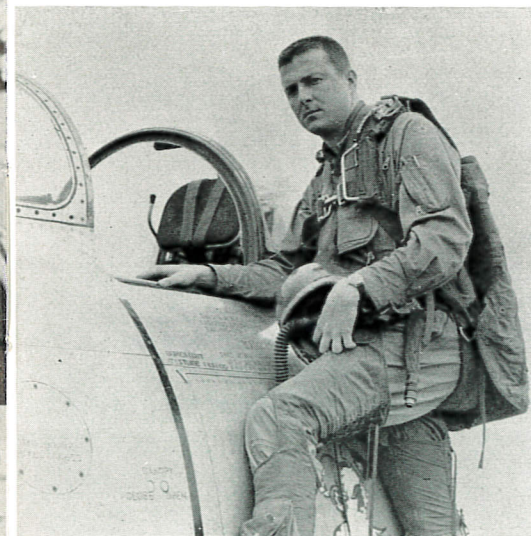
2/Lt. Willaim A. Schneider
"DUKE"



2/Lt. Ronald E. Millard
"RON"

— BRIEFING —

L to R: Col L. D. Pearch, Capt. C. White, 2/Lt. K. Davis, 1/Lt. G. M. Hendricks Jr.



2/Lt. James E. Futhey
"JIM"

"A" flight



1/Lt. Raymond D. Anderson
"ANDY"

— HEADQUARTERS FLIGHT —

Lt. Col Henry J. Pascho
"HANK"

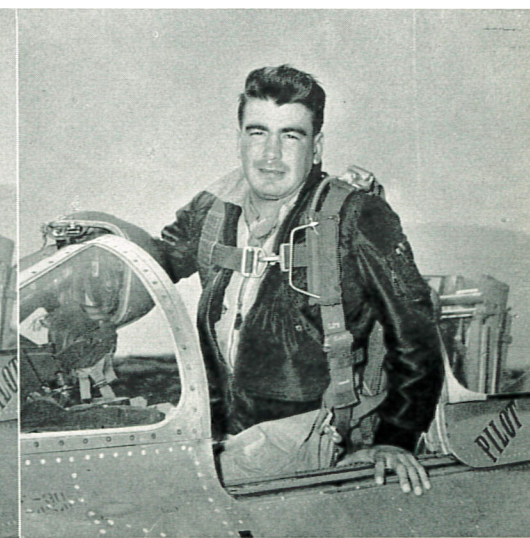
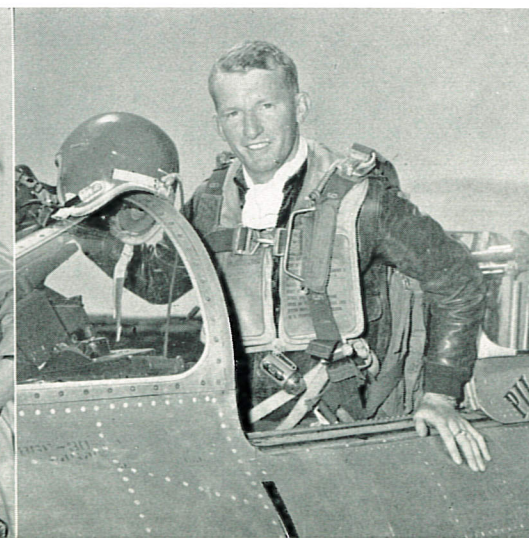
Major Magnus P Johnson.
"MICKEY"

Major Joseph E. Wisby
"WHIZZER"

2/Lt. Jack W. Givens
"JACK"

1/Lt. John C. Whistler

1/Lt. Robert A. Preciado
"PRECE"

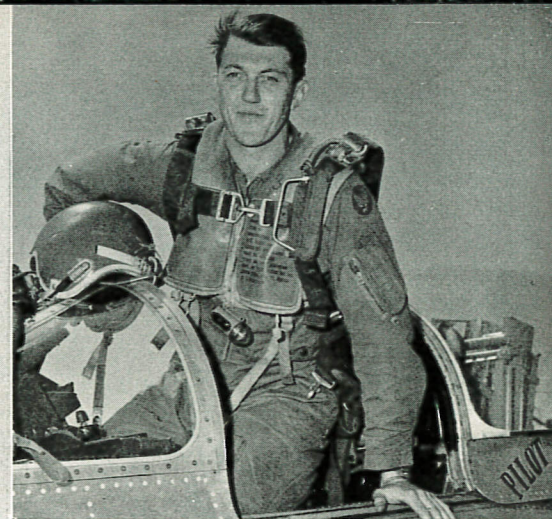




1/Lt. James S. Thompson
"TOMMIE"



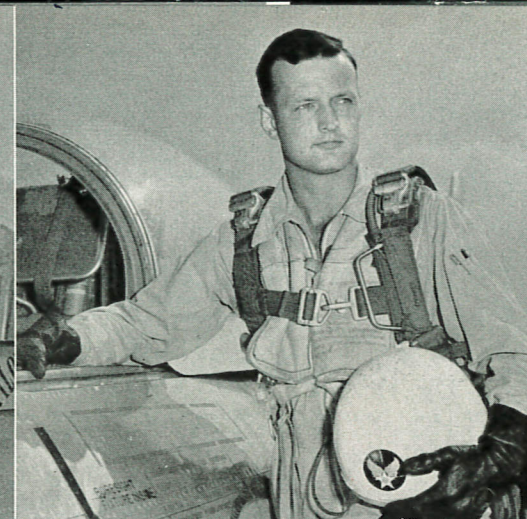
1/Lt. Robert A. Gay
"LUCKY"



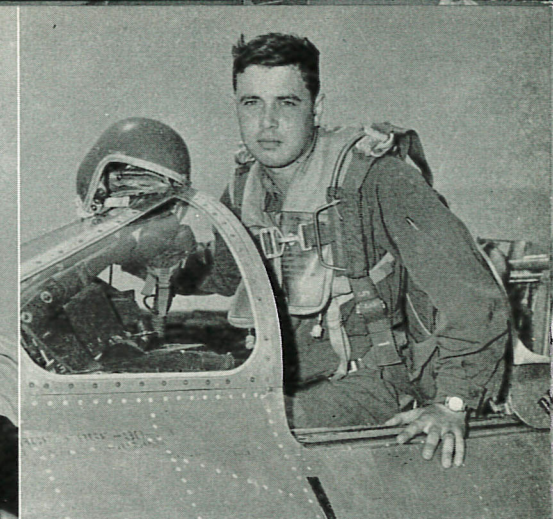
2/Lt. Thomas H. Griffin
"GRIF"



Capt. Harold L. Johnson

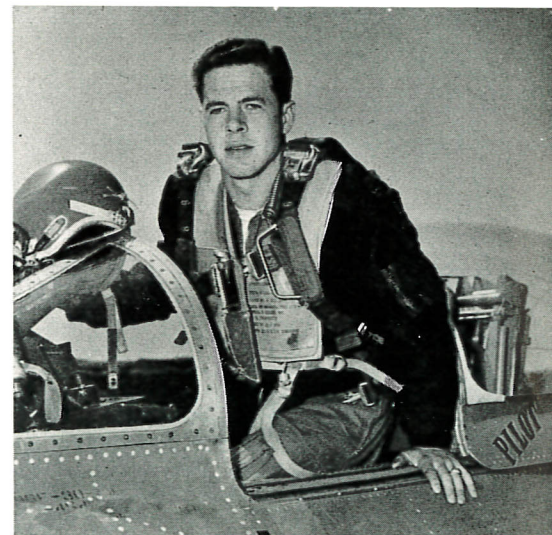


2/Lt. Herbert B. Aune
"HERB"



2/Lt. William F. Weiger
"BUD"

"B" blight



2/Lt. Paul G. Neely
"PAU:"



2/Lt. Georced M. Hendricks
"HEN"

"C" blight

Capt Eugene D. Voigt
"DEACON"



Lt. Edwin J. Scarff
"ED"



2/Lt. Bradford L. Sharp
"BRAD"



Capt. Charles R. White
"PUSHER"



2/Lt. Ronald J. Kelly
"KEL"



1/Lt. Gene T. Pemberton
"PEM"

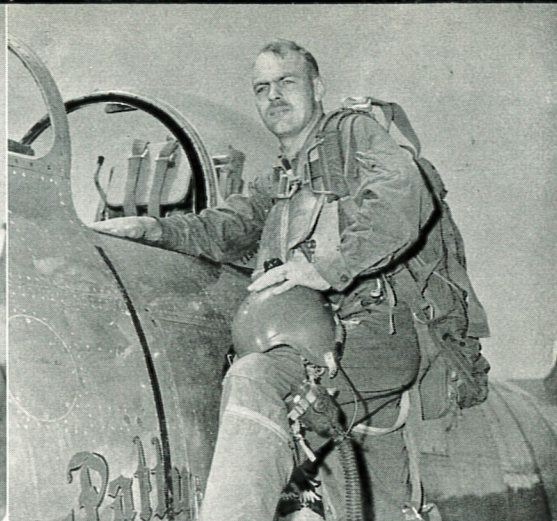




Capt Kenneth R. Ellis
"KEN"



2/Lt. Stanley E. Franz
"FRITZ"



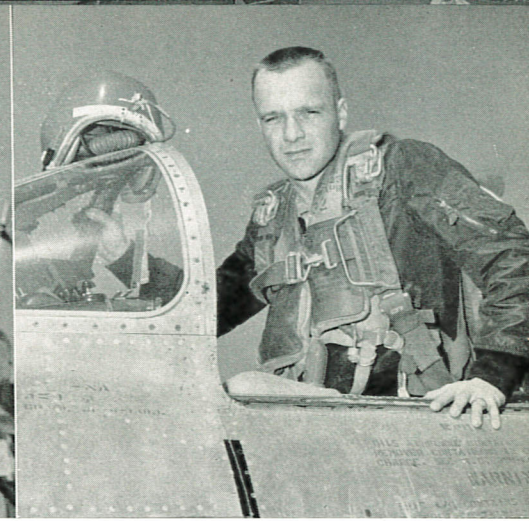
2/Lt. Leo E. Mortensen
"MORT"



Col. Lowell D. Pearch



Lt. Col. Val W. Bollwerk



Capt. Jack Q. Kimball

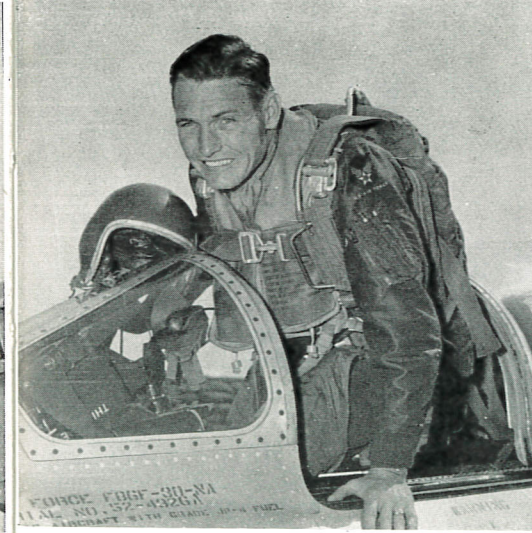


2/Lt. John W. Kelbly
"WES"

"D" Flight

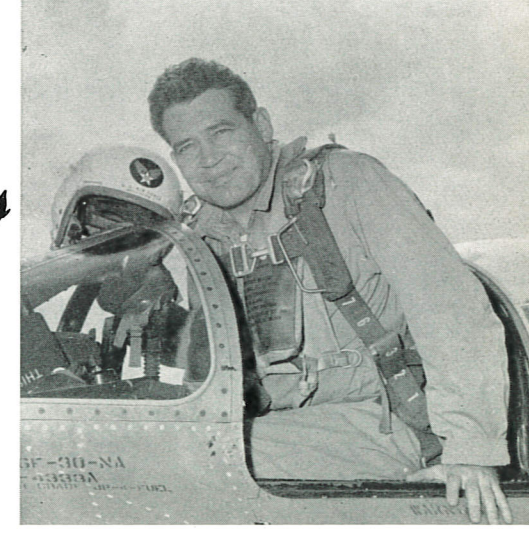


2/Lt. George A. Amussen
"AMO"



Capt. Alfred C. Evers

Attached Pilots



Maj. James H. Doolittle Jr.

2/Lt. Edward E. Seaman
"ED"



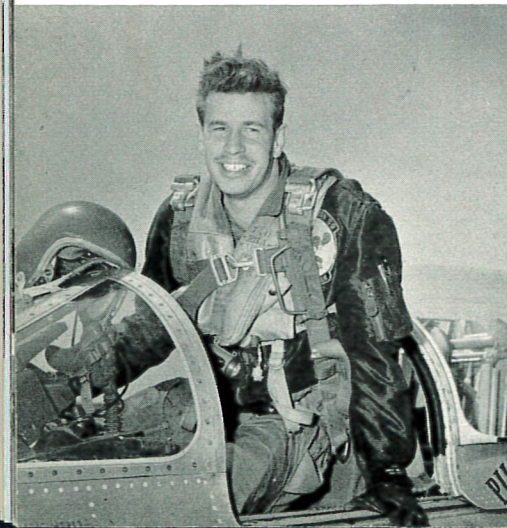
2/Lt. John C. Kallenberg



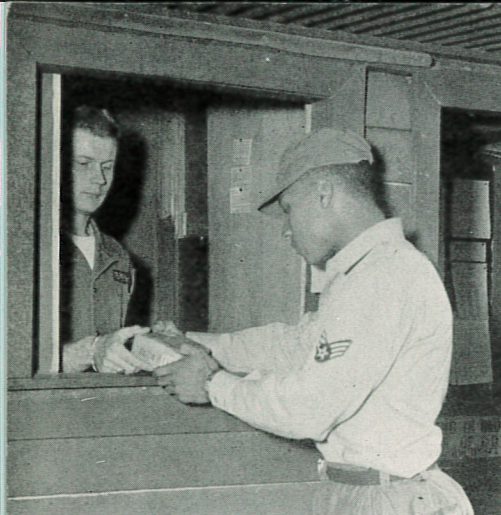
2/Lt. Harry T. James
"JAMY"



Maj. George V. Lane

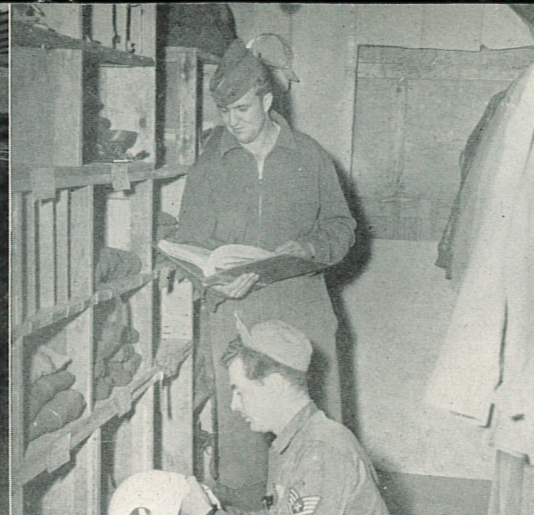


Maj. George A. Olson



— MAIL —

A/IC C.A. Smith, A/IC W. C. Pollard



— PERSONAL EQUIPMENT —

2/Lt S.A. Zevin, S/Sgt F. D. Blake



— GUN CAMERA —

L. To R: S/Sgt D. C. Breitrack, A/2C W. E. Rittenhouse, A/1C J. C. Adair



— GROUND POWER —

Kim Hi Moon, A/3C J. W. Sanders, S/Sgt J. M. Bennett, A/2C C. F. Orshek, A/2C R. D. Wade.



— OFFICE —

A/IC C. A. Smith, A/IC W. C. Pollard, A/3C C. J. Petersen.



— ARMAMENT —

STANDING L to R: A/1C J. B. Love, A/2C D. C. Schwankl, M/Sgt F. B. Sipes, S/Sgt D. C. Breitrack, S/Sgt W. S. Head, T/Sgt J. A. Jiminez, S/Sgt C. O. Ashley, T/Sgt C. W. Swartz, S/Sgt J. W. Kerr, KNEELING: A/1C R. E. Freeman, A/2C C. Peterson, A/2C W. F. Lowery, A/2C J. H. Ishee, A/2C W. E. Rittenhouse, A/2C F. R. De Prima, A/1C E. J. Richmeier, A/1C J. Dissinger, A/1C J. C. Adair.



— ENGINEERING —

STANDING L to R: T/Sgt E. C. Skinner, M/Sgt L. A. Hammond, Capt K. R. Ellis, Major J. E. Wisby, WOJG J. H. Bell, M/Sgt J. B. Gable, M/Sgt G. A. Wilcox, M/Sgt M. E. Hollingsworth, KNEELING L to R: A/2C O. Seefeld, A/2C F. L. Long, A/3C V. L. Lewis, S/Sgt C. N. Weaver.



— ARMAMENT —

L to R: A/1C J. C. Adair, S/Sgt D. C. Breitrack, T/Sgt J. A. Jiminez, M/Sgt F. B. Sipes.

— COMMUNICATIONS —

STANDING L to R: 2/Lt S. E. Franz, T/Sgt W. E. Flood, S/Sgt J. English, KNEELING: A/2C D. A. Anderson, A/1C C. Web, A/2C L. G. Wilkie.





— CREW CHIEFS A FLIGHT —

Front Row L to R: A/2C Leroy Braden, A/1C Andrew Throwe, A/2C Edward M. Fossen, A/2C James F. Hodge.

Rear L to R: James Held, A/2C William Allen, M/Sgt. Charles F. Donnley, A/2C Richard B York, A/3C Jack L. Busher

— CREW CHIEFS D FLIGHT —

Seated L to R: S/Sgt James Fleer, S/Sgt James Kerr, A/2C Willard Ernst, A/2C Ernesto Martinez, A/3C Ralph D. Ford.

Standing L to R: A/2C Forrest Lowery, A/2C Clyde Peterson, M/Sgt Roy L. Killebrew, A/1C John M. Dissinger, A/2C Dale R. Hetrick, A/2C James H. Ishee, A/3C Donald H. Liehr.

Kneeling L to R: A/3C John M. Spanko, A/2C Andrew C. Bendish.



— CREW CHIEFS B FLIGHT —

Front Row L to R: A/3C Duane End, A/1C Frank Pickett, A/2C Jack Heckman.

Rear L to R: A/3C John Newton, A/3C Kenneth Roberts, A/2C Russell D. Bock, A/B Roland P. Marcotte, T/Sgt B. H. Scholz.



— HANGER CREW —

L to R: T/Sgt Clarence O. Mullis, A/1C L. V. Tanner, A/1C Ned D. Lantz, A/3C Richard L. Baus, A/3C Gerald A. Broeking, A/3C Richard A. Kumm.



— CREW CHIEFS C FLIGHT —

Front Row L to R: John L. Deschner, A/2C Franklyn L. Brown, A/1C Fred Kibby, S/Sgt Clyde D. Ashley, A/2C Billy G. Light.

Rear L to R: A/3C Clarence Jones, A/3C Otis B. Oakley, A/3C Leroy Plummer, A/3C Robert Bowman, A/2C Richard Edlund.

— ENGINE BUILD-UP —

L to R: A/2C David L. Redfern, A/3C Everett R. Tacker, A/2C Marvin Sweeter, S/Sgt William Stabler, A/2C Charles R. Klotz, A/2C John W. Pogue.





— INSTRUMENT SHOP —

L to R: A/2C Delbert Barber, A/2C Wilbur
D. Anderson, S/Sgt Norman G. Green.

— THE TING-A-LING LOUNGE —

L to R: 2/Lt. Bradford L. Sharp, 1/Lt.
George M. Hendricks, 1/Lt. Raymond D.
Anderson, 2/Lt. John W. Kelbly.



— P.O. 'D PIDGEONS PASSIONATE
PASTIME —

L to R: 1/Lt David F. Williams, 2/Lt Paul
G. Neely, 2/Lt. John W. Givens.

